

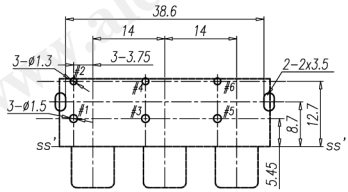
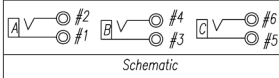
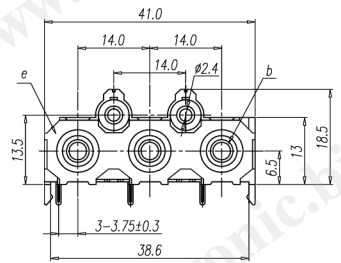
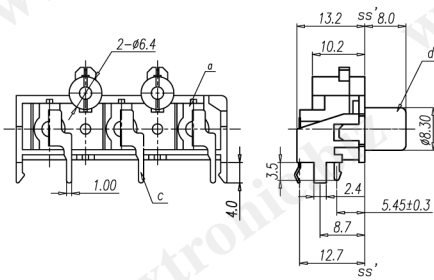
CATEGORY	DESCRIPTION	P/N #
CONNECTOR	RCA Jack 1*3 Parts R/A T/H Without Shielding, Top Screw Holes*2	RJ014R-130X0-XX00

RJ014R-130X0-XX00

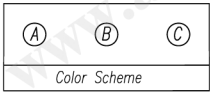
Color Scheme
Material & Plating

Table 1

X	Housing	Washer
2	ABS UL94-HB	ABS UL94-HB
7	PBT UL94V-0	PBT UL94V-0



Recommend PCB Layout
Jack Top View
Tolerance:±0.05
Recommend PCB Thickness: 1.6mm

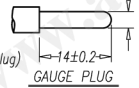


Color Scheme

XX	HOUSING	A	B	C
10	Black	Red	Blue	Green
11	Black	Red	White	Yellow
13	Black	Yellow	White	Red
22	Black	Blue	Green	Red
29	Black	Red	Green	Blue
48	Red	Yellow	White	Red
49	Red	Green	Blue	Red

SPECIFICATION

- Voltage and Current Rating: 12V & 1A
- Contact resistance: 30mΩ MAX.
- Insulation resistance: 100MΩ MIN. @ DC500V
- Withstand voltage: 500VAC for 1min.
- Insertion Force: 3Kgf MAX.
- Extraction Force: 0.3Kgf MIN.
- Withdraw Force for Center Contact: 0.08Kgf MIN.
(Use a OD=3.2±0.005mm, Length=14±0.2mm Gauge Plug)
- Terminal Strength: The terminal shall be capable of withstanding a force of 3Kgf applied in any direction for 0.5 secs without losing and breakdown
- Life test: 1,500 cycles
- Temperature Range: -25℃~70℃
- To conform with the "QC-03-045" & "RoHS DIRECTIVE"
- Solder heat resistance: wave soldering 260℃ 5 secs



NO.	PART NAME	Q'TY	MATERIAL	PLATING & COLOR	REMARK
e	Front Cover	1	ABS UL94-HB	Black	
d	Terminal#1,3,5	3	Brass, T=0.4mm	CuSn Plating	銅鍍防氧化層
c	Terminal#2,4,6	3	Brass, T=0.4mm	CuSn Plating	
b	Washer	3	See Table 1	See Color Scheme	
a	Housing	1	See Table 1	See Color Scheme	

UNLESS OTHERWISE SPECIFIED TOLERANCES

DECIMALS: X . : ±0.5	ANGLES: X ° : ±2°
X.X : ±0.3	X.XX : ±1°
X.XX : ±0.2	

Product Drawing
ALEXTRONIC

SCALE: 1/1 UNIT: mm DWG. NO: _____
 SIZE: A3 PAGE: 1 OF 1 REV: A01

APPROVED BY	CHECKED BY	PREPARED BY
XZQ	PJ	Luguan

CUSTOMER COPY